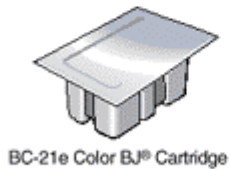
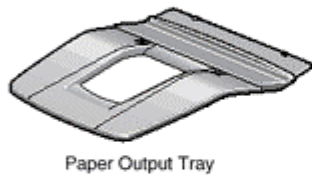
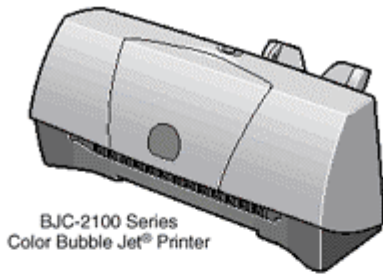


BJC-2100 Series Quick Start Guide

Step 1: Unpack The Printer

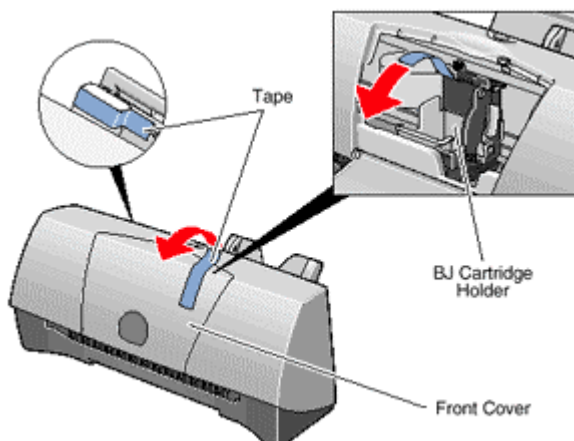
1. Remove all items from the box.

- The Install Me First CD-ROM includes:
 - Microsoft ® Windows ® printer drivers
 - Macintosh ® printer driver
 - IS-22 Color Scanner Cartridge driver
 - Online User's Manual
 - Software applications
 - Electronic registration

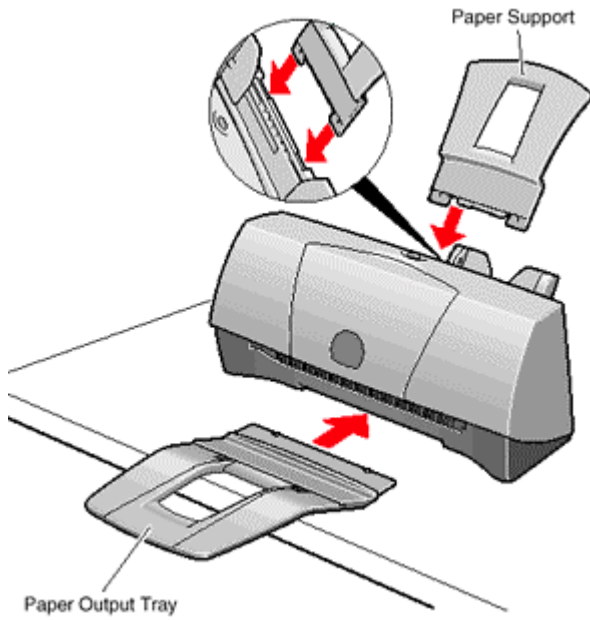


2. Remove all shipping tape and materials from the unit.

- Open the front cover and remove the protective material and fixing tape from the BJ cartridge holder.
- Tape may not be in the exact locations shown here.

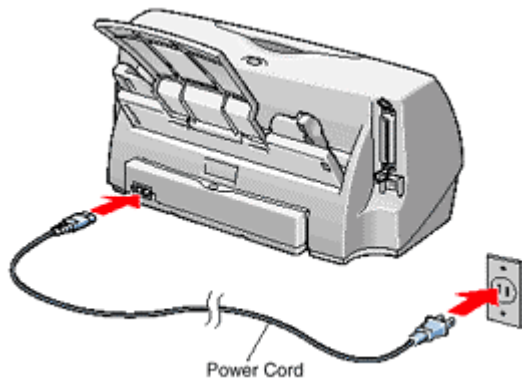


3. Attach the paper support and attach the paper output tray to the front of the printer.



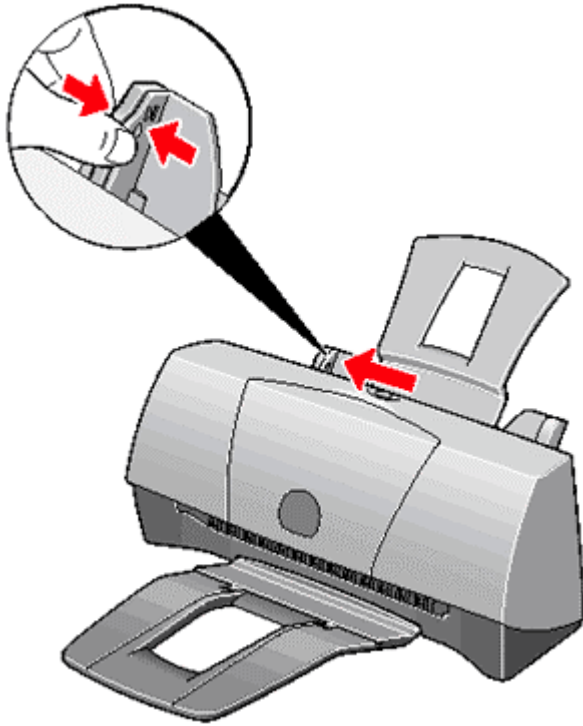
Step 2: Plug In the Printer

The printer is turned on as long as it is plugged in. There is no power button or power light on this printer. When not being used, the printer automatically goes into sleep mode to conserve energy.

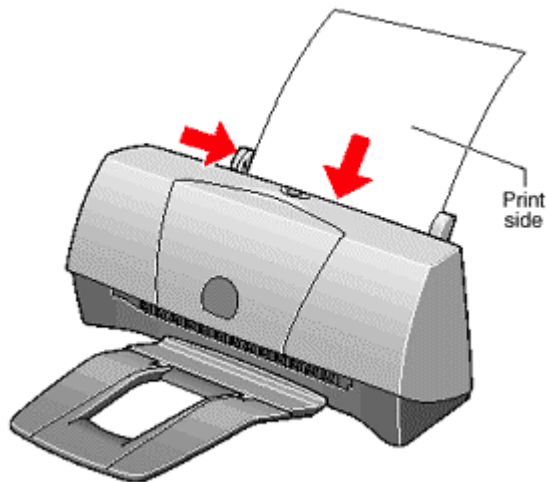


Section 3: Load Paper

1. Move the paper guide to the left to match your paper size.

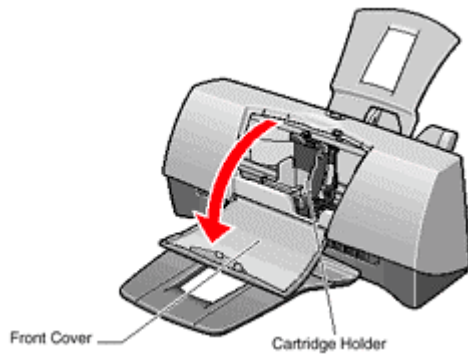


2. Insert the stack of paper with the print side up and adjust the paper guide.

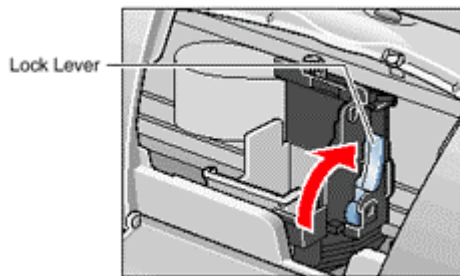


Section 4: Install The BJ Cartridge

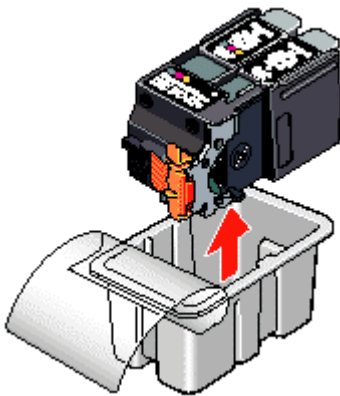
1. Open the front cover.
 - The cartridge holder moves to the left.



2. Make sure the blue lock lever on the cartridge holder is raised.

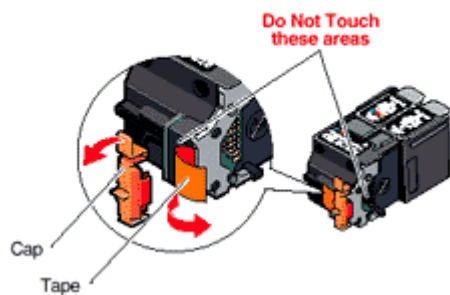


3. Remove the cartridge from its package.

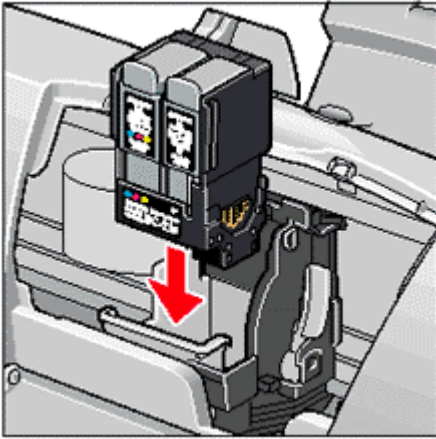


4. You MUST remove these protective materials:

- Orange cap
- Orange tape



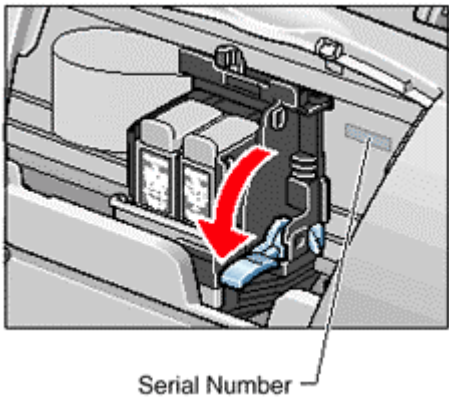
5. Set the cartridge into the cartridge holder.



6. Lower the blue lock lever until it locks into place.

Important!

Before you close the front cover, write down the serial number (located inside the printer to the right of the cartridge holder). You'll need this for product registration.

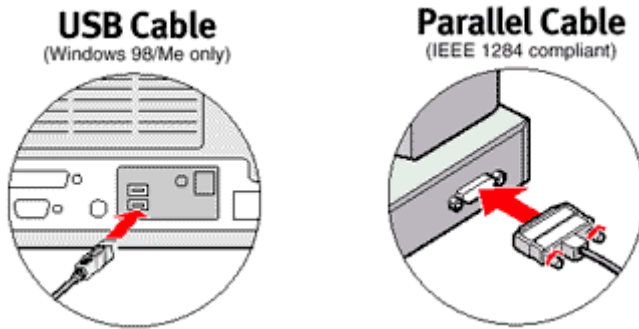


7. Close the front cover.

Section 5: Install The Printer Software

Windows® 95, Windows 98, Windows Me, and Windows NT 4.0 Users

1. Connect either a USB or parallel cable to the computer, but DO NOT connect it to the printer. (Port location depends on computer.)



2. Turn on the computer.

3. Insert the Install Me First CD-ROM into your CD-ROM drive. Wait for your CD-ROM drive to start up.

4. When you see this screen, click Next.

If you do not see this screen, see the Installation Tips following step 5B.



5. When you see this screen, connect your interface cable to the printer.

- Connect the free end of the USB or parallel cable to the printer.
- USB Cable Users: Please wait a few minutes while your computer performs steps necessary for completing USB installation.



6. After connecting the interface cable, click Next.

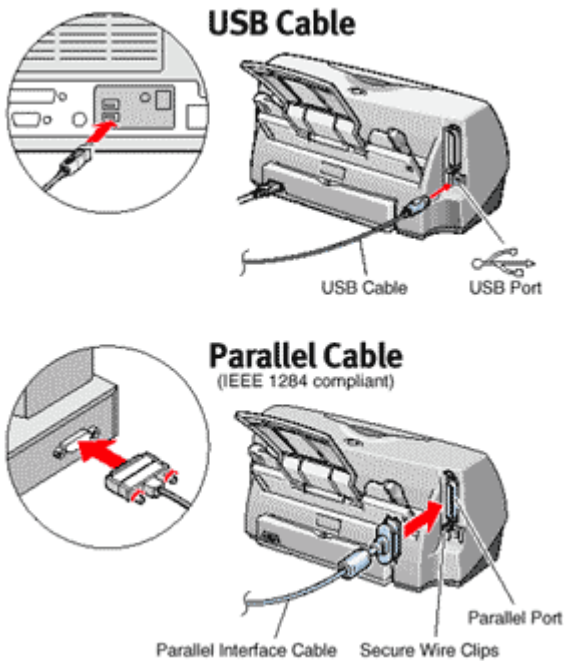
7. Continue to follow the on-screen instructions.

- Setup includes:
 - Canon BJC-2100 Installation
 - Product Registration
 - Canon Creative Installation

8. After installing software, you may be asked to restart your computer.

Windows 2000 Users

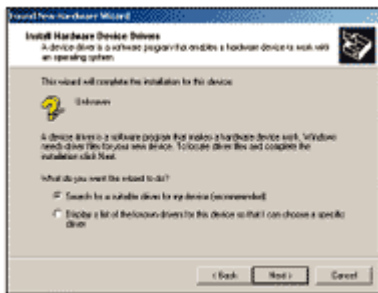
1. Connect either a USB or parallel cable to the computer (port location depends on computer), and then connect it to the printer.



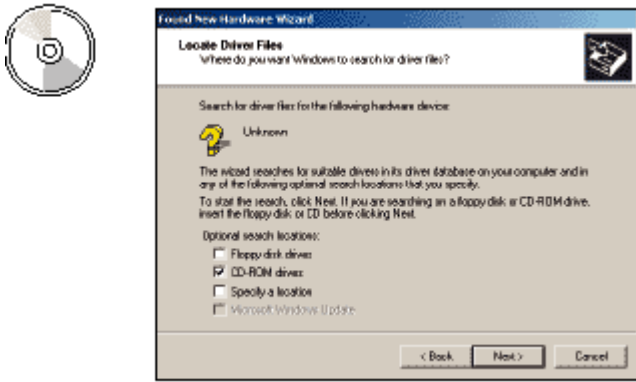
2. Turn on the computer.
3. The Found New Hardware Wizard screen appears. Click Next.
Note: If you do not see this screen, skip to step 8



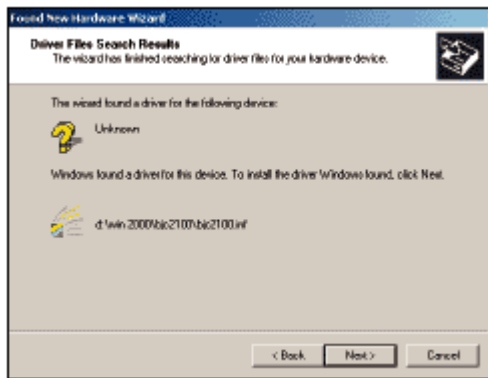
4. When this screen appears, choose "Search for a suitable driver for my device," and click Next.



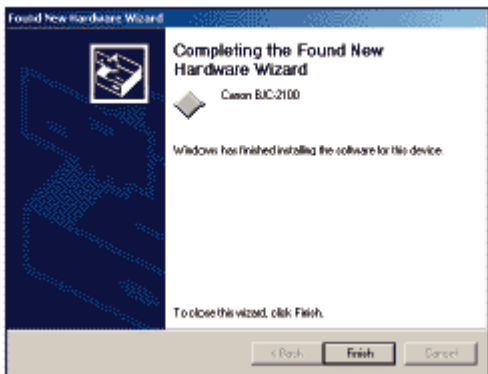
5. Click the "CD-ROM drives" checkbox; be sure to uncheck the other options. Insert the Install Me First CD-ROM into your CD-ROM drive and wait for the drive to start up. Then click Next.



6. Once the driver is found, this screen appears. Click Next.



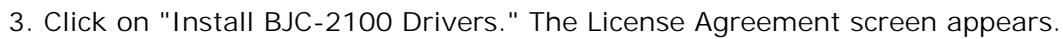
7. The next screen shows successful completion of this installation. Click Finish.



8. Setup starts automatically. Follow the on-screen instructions.

- Setup includes:
 - Canon BJC-2100 Installation
 - Product Registration
 - Canon Creative Installation

9. After installing software, you may be asked to restart your computer.



4. Read the agreement and click Agree to continue. The next screen asks you to install the printer.

5. Click on Install to continue with Easy Install. The next screen reports the progress of the driver installation.

6. After driver installation, you must reboot the system. Click the Restart button when you see the "Installation was successful" screen.

- After rebooting, the opening screen appears, allowing you to proceed with other portions of the installation process.

7. Once installation is complete, be sure to go to the Chooser menu (under the Apple® icon) and select the BJC-2100 as the default printer.

